

MONTHLY MEMBERSHIP PROGRESS REPORT

District 25 F

Results as of: 3/31/2025

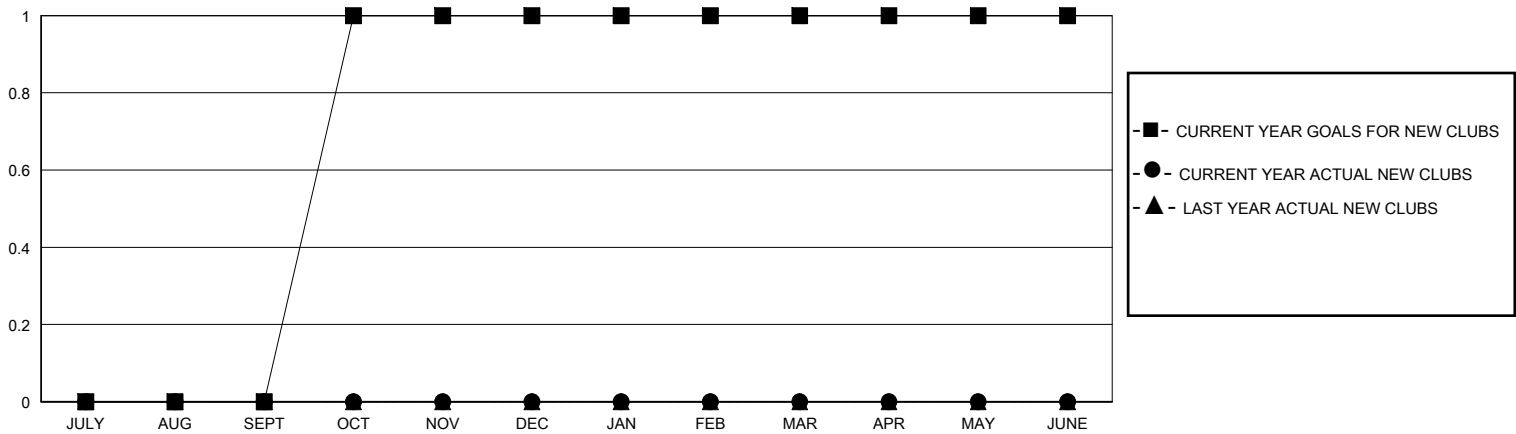
GMT:

LOCATION INDIANA

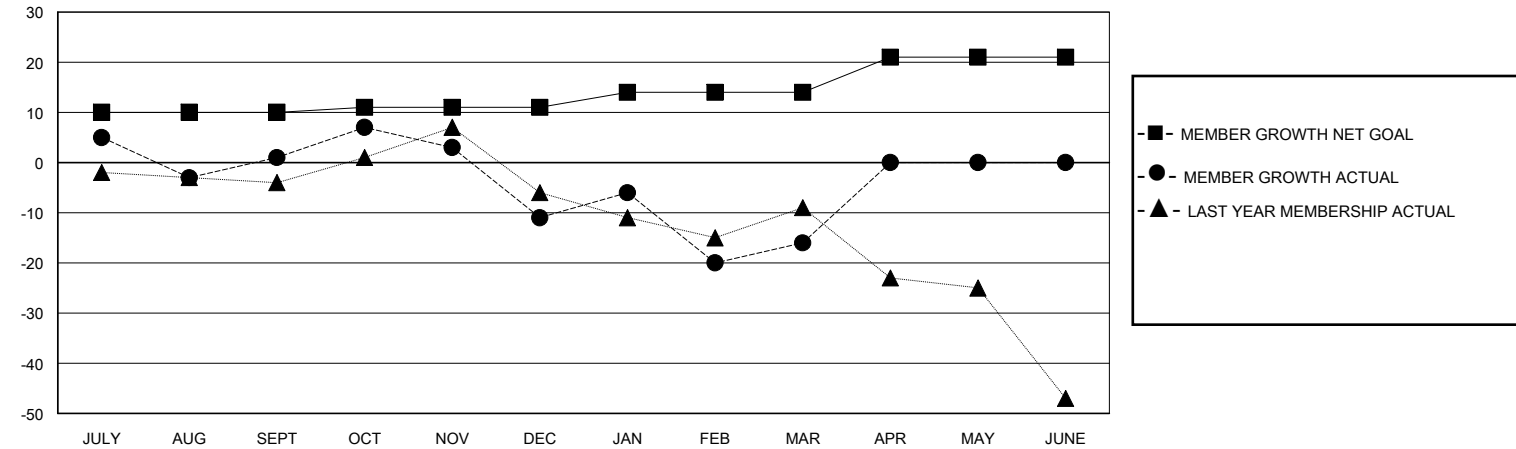
GMT CA

| Clubs | | | | Members | | | |
|-----------------------|---------------|-----------|---------------|-----------------------|------------------------|----------------------|--|
| RESULTS FOR 2024-2025 | | | | RESULTS FOR 2024-2025 | | | |
| QUARTER | NEW CLUB GOAL | NEW CLUBS | DROPPED CLUBS | QUARTER | MEMBER GROWTH NET GOAL | MEMBER GROWTH ACTUAL | DROPPED MEMBERS ACTUAL (including transfers) |
| JULY/AUG/SEPT | 0 | 0 | 0 | JULY/AUG/SEPT | 10 | 31 | 26 |
| OCT/NOV/DEC | 1 | 0 | 0 | OCT/NOV/DEC | 1 | 22 | 33 |
| JAN/FEB/MAR | 0 | 0 | 0 | JAN/FEB/MAR | 3 | 36 | 39 |
| APR/MAY/JUNE | 0 | 0 | 0 | APR/MAY/JUNE | 7 | 0 | 0 |

GOALS AND ACTUAL NEW CLUBS CUMULATIVE



GOALS AND ACTUAL MEMBERS CUMULATIVE



| | | | |
|------------------|---|---------------------------------|--------------|
| DROPPED CLUBS: 0 | 21 CLUBS OF 53 ADDED 1 OR MORE NEW MEMBERS | GENDER DISTRIBUTION | |
| | | MALE | 850 (68.83%) |
| | | FEMALE | 385 (31.17%) |
| DROPPED MEMBERS | CLICK HERE FOR CUMULATIVE MEMBERSHIP DATA | TOTAL FAMILY UNIT MEMBERS | |
| DECEASED | | 0 | |
| CLUB CANCELLED | | FAMILY MEMBERS PAYING HALF DUES | |
| OTHER | | 0 | |
| TOTAL | | | |
| | | | |